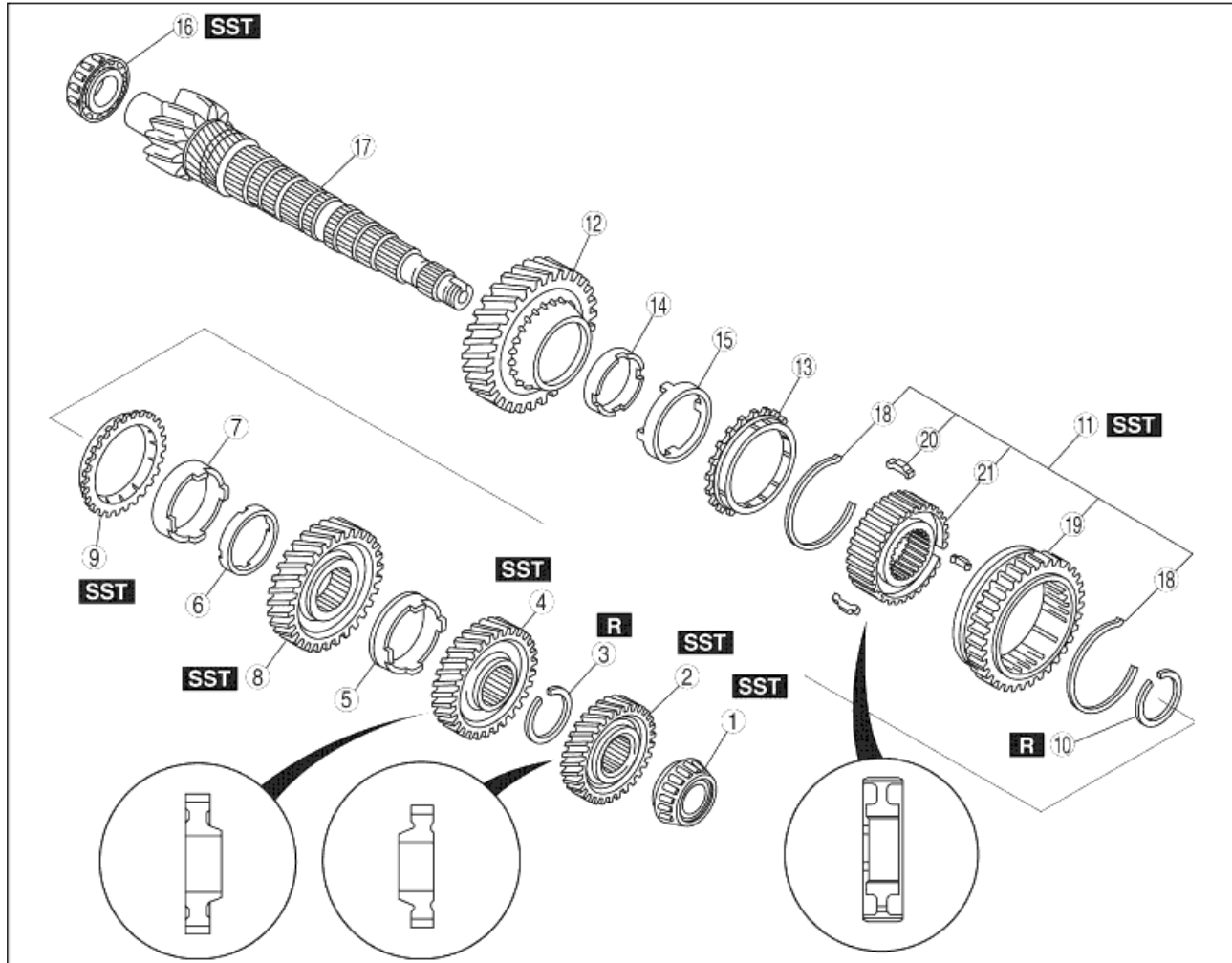


SECONDARY SHAFT COMPONENTS DISASSEMBLY

A6E511217301M02

1. Disassemble in the order shown in the figure.



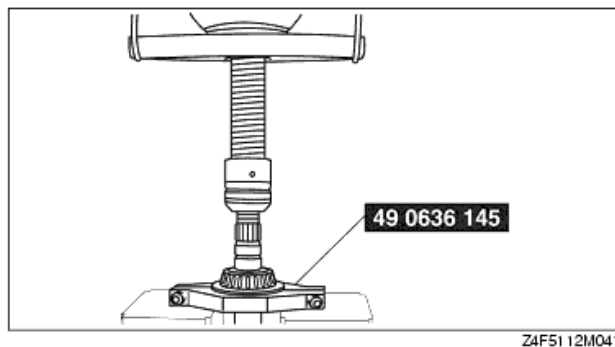
A6E5112M111

1	Bearing (See Bearing and Secondary 4th Gear Disassembly Note)
2	Secondary 4th gear
3	Retaining ring
4	Secondary 3rd gear (See Secondary 3rd Gear and 2nd Gear Disassembly Note)
5	Friction damper
6	Inner cone
7	Double cone
8	2nd gear
9	Synchronizer ring
10	Retaining ring
11	1st/2nd clutch hub component (See 1st/2nd Clutch Hub Component, 1st Synchronizer Ring, and 1st Gear Disassembly Note)
12	1st gear
13	Synchronizer ring

14	Inner cone
15	Double cone
16	Bearing (See Bearing (Secondary Shaft End) Disassembly Note)
17	Secondary shaft gear
18	Synchronizer key springs
19	Clutch hub sleeve (reverse gear)
20	Synchronizer keys
21	1st/2nd clutch hub

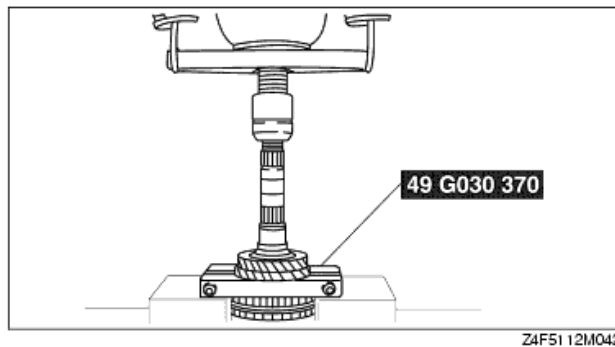
Bearing and Secondary 4th Gear Disassembly Note

1. Remove the bearing and secondary 4th gear using the **SST**.



Secondary 3rd Gear and 2nd Gear Disassembly Note

1. Remove the retaining ring.
2. Shift the gears to 1st gear.
3. Remove the secondary 3rd gear and 2nd gear using the **SST**.



1st/2nd Clutch Hub Component, 1st Synchronizer Ring, and 1st Gear Disassembly Note

1. Remove the retaining ring.
2. Remove the 1st/2nd clutch hub component, 1st synchronizer ring, and 1st gear using a press.

Bearing (Secondary Shaft End) Disassembly Note

1. Remove the bearing using the **SST**.

